

Packaged imageWARE Software Offerings

imageWARE Document Manager Enterprise Edition



Positioning

imageWARE Document Manager Enterprise Edition is a comprehensive document management solution offering scanning, storage, backup, binder creation, indexing and retrieval of electronic and hardcopy documents. In addition to these powerful functions iW DM Enterprise Edition also supports document versioning, audit trails, system logs, workflow management, digital signatures, check in and check out services, and document lifecycle management.

Applications

- Accounts Payable and Receivable
- Purchase Order Management
- Departmental Records Retention & Management
- Financial Document Lifecycle Management
- Document Version Control (Engineering/Training/Marketing)

Supported Canon Models

- Scan from all imageRUNNER engines
- Mailbox integration for all iR engines

imageWARE Document Manager Workgroup Edition



Positioning

imageWARE Document Manager Workgroup Edition is optimized for small workgroups and project teams. This powerful document management solution enables document capture, management, and distribution in any document centric workplace with ease and efficiency. The optional imageWARE Web Document Server can be added for powerful Web-based access to the imageWARE database. And by tightly integrating with Canon's imageRUNNER hardware, Canon provides a truly integrated document solution.

Applications

- Workgroup Document Storage and Retrieval
- Purchase Order Management
- Small Company Document Storage & Management

Supported Canon Models

- Scan from all imageRUNNER engines
- Mailbox integration for all imageRUNNER engines

imageWARE Scan Manager



Positioning

The imageWARE Scan Manager is a production-level image capture and indexing front-end. The solution offers advanced imaging functions such as zone OCR, barcode and forms recognition, pre/post indexing, and input masking functions. Scan Manager is ideal for scanning a large volume of documents and efficiently processing index data. Scanned documents and their associated indexes are released to the imageWARE Document Manager Workgroup Edition or Enterprise Edition for storage, retrieval, viewing, and authorized editing.

Applications

- Production level document scanning
- Insurance Claims
- Medical Office Documentation
- Government Forms
- Standard Invoices, Purchase Orders
- Anywhere large quantities of standard forms are utilized

Supported Canon Models

- Scan from all Canon DR-Series & TWAIN/ISIS compliant Document Scanners
- Scan from all imageRUNNER engines

Packaged imageWARE Software Offerings

imageWARE Document Manager Client for MEAP



Positioning

imageWARE Document Manager Client for MEAP is an extension of the PC-based imageWARE Document Manager application. iW DM for MEAP runs on MEAP compatible imageRUNNER MFPs and allows users direct, authenticated access to iW DM via their MFP. Users can easily scan, index, and route paper-based documents from imageRUNNER MFPs to their selected imageWARE Document Manager Cabinets and Folders. This saves time and steps of later indexing and storage.

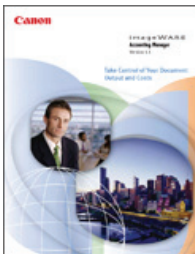
Applications

- Any customer using imageWARE Document Manager
- Permits distributed scanning driving greater workplace efficiency
- Ideal for workgroups receiving large volume of paper and already using Document Manager

Supported Canon Models

- All MEAP Compatible imageRUNNER-imagePRESS engines

imageWARE Accounting Manager



Positioning

imageWARE Accounting Manager is a Web based document accounting and analysis solution from Canon. imageWARE Accounting Manager is the perfect tool for allowing organizations to effectively track document output, manage associated output costs and recover lost revenue from abusive printing. Designed for simple installation and ease of use, imageWARE Accounting Manager accounts for all document activity processed through Canon devices. The solution also supports accounting for Copy and Print output for non-Canon copiers and printers.

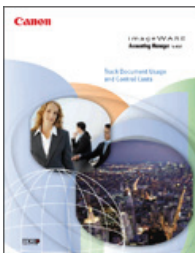
Applications

- Legal Firms, Consulting Firms, Architectural Firms
- Small and Medium Enterprises desiring to track costs and control output/device utilization
- Large Enterprise departments desiring to track costs and control output/device utilization
- Ideal for customers who have had Document Production Assessments as a tool to maintain rightsized environments

Supported Canon Models

- All imageRUNNER-imagePRESS engines
- Canon legacy copiers/MFPs
- Non-Canon copiers
- Non Canon Printers

imageWARE Accounting Manager for MEAP



Positioning

imageWARE Accounting Manager for MEAP is a server-less device-based cost accounting and recovery system. Through imageWARE Accounting Manager for MEAP, customers can easily track user or group activity at imageRUNNER devices, extracting job information via Canon's Remote User Interface Software. This server-less software is easy to deploy and includes reporting tools capable of collecting detailed job related information from multiple MEAP devices deployed with imageWARE Accounting Manager for MEAP.

Applications

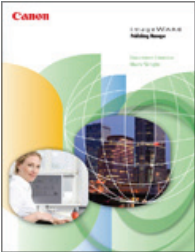
- Small & Medium customers desiring to track costs and control output/device utilization
- Customers desiring to track costs and control output that cannot manage a Server based Accounting solution
- Departments in large organizations desiring to track costs and control output/device utilization

Supported Canon Models

- All MEAP compatible imageRUNNER-imagePRESS engines

Packaged imageWARE Software Offerings

imageWARE Publishing Manager



Positioning

A solution for office-focused desktop publishing, imageWARE Publishing Manager Version 2.0 can be used to create professional quality documents from multiple files types including both Microsoft® Windows-based office files and scanned images. Special features include dynamic publishing and leveraging the finishing features on compatible Canon imageRUNNER devices. Documents created in imageWARE Publishing Manager Version 2.0 can be archived in the imageWARE Document Manager Workgroup Edition or Enterprise Edition database for fast and easy retrieval for on demand printing.

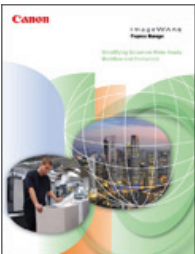
Applications

- All Color imageRUNNER users
- Marketing organizations engaging in collateral materials development
- Marketing organization engaging in variable data direct mailing campaigns
- Training organizations for the creation of training materials
- HR organizations for the creation of employee benefits information

Supported Canon Models

- All imageRUNNER-imagePRESS engines with Canon Print Function
- Non-Canon printers (limited functionality)

imageWARE Prepress Manager



Positioning

An integrated workflow solution, imageWARE PrePress Manager enables customers to manage the complete print job workflow from their Windows® desktop. From paper document import using Hot Folder technology, to merging with digital content, to document and image editing to printing or digital output, all taking full advantage of the expansive functions of Canon imageRUNNER and imagePRESS scanners and finishers. imageWARE PrePress Manager includes time-saving and workflow-enhancing features such as batch image correction and automatic import settings designed to reduce the need for manual intervention during the document creation process. For easy document storage and retrieval, completed documents can be stored directly in imageWARE Document Manager cabinets.

Applications

- All Production Black and White and Color imageRUNNER users
- Print for Pay organizations desiring simple document make ready capabilities
- CRD customers requiring document make ready tools for easy creation of professional output
- Print shops using JDF workflow requiring easy document make ready capabilities with the ability to deliver output to Canon and non-Canon engines
- Print shops desiring to support variable data capabilities for their customers

Supported Canon Models

- All imageRUNNER-imagePRESS engines regardless of print controller
- Non-Canon devices supporting JDF

imageWARE Secure Audit Manager



Positioning

Secure Audit Manager is an embedded software application designed to prevent leakage of sensitive information and track down unauthorized activity. Key is iW SAM's core function of capturing all job activity on imageRUNNER devices – including the associated images. Upon capture, Secure Audit Manager stores all log data and images to an external Oracle database for storage and review, and later search. Through Secure Audit Manager, customers can deter information leakage and have complete audit trails associated with all copy, fax, scan, and print jobs driven through Canon imageRUNNER devices.

Applications

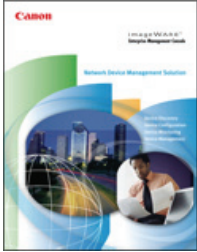
- Financial Industry Sector customers
- Government Sector customers
- Legal Firms
- Healthcare organizations
- HR Departments
- Customers under regulatory requirements to maintain information confidentiality

Supported Canon Models

- All Canon imageRUNNER devices

Packaged imageWARE Software Offerings

imageWARE Enterprise Management Console



Positioning

imageWARE Enterprise Management Console is Canon's Enterprise Device Management software. Built upon a core framework supporting device discovery and remote management, iW EMC is capable of providing Network Administrators with filtered device views, remote device configuration, and automation/scheduling of many device management tasks. iW EMC also ships with a number of plug-ins for specific tasks including Address Book Management, Meter Capture, and Device Driver Installation.

Applications

- For customer network administration personnel desiring to minimize management tasks for deployed devices
- For customers needed a tool to automate device discovery and delivery and management of printer drivers
- For customers requiring the ability to support Canon and non-Canon devices

Supported Canon Models

- All Canon hardware devices
- Non Canon devices compliant with the standard printer MIB

Third-Party Software Products

NT Ware uniFLOW Output Manager



Positioning

uniFLOW Output Manager is an integrated solution featuring MFP and printer management functionalities. Features include document print & copy accounting, Universal Secure printing, rules-based job routing and production printing features such as print room management, job ticketing and web-based job submission.

With its modular design and emphasis on security, uniFLOW OM is particularly attractive to IT managers who value its ease of integration and strong level of control within networked environments.

Applications

- Print and accounting solutions for SMB and large enterprises, including chargeback, color control and internal budget allocation
- Card authentication solutions to lock down MFP devices
- Feature-rich yet simple secure printing that delivers output to any networked imageRUNNER device
- Promote efficient and cost-effective MFP use by enforcing user print behavior through automatic job re-routing.
- Streamline copy room print workflow via electronic jobs submission

Supported Canon Models

- All Canon MFP and SFP devices
- All HP SFP devices

eCopy ShareScan OP



Positioning

eCopy SSOP is an embedded scanning and document distribution application providing customers with an easy means of converting paper based documents to digital form for delivery via e-mail, fax, and various document management applications. Providing the most robust connector capabilities in the industry, eCopy software is capable of being connected to the vast majority of third party applications in use by customers today.

Applications

- Comprehensive document scanning and distribution
- High level of user security, administrator and end user ease of use
- Customers requiring tight integration to key software applications (i.e. Doc. Mgmt, Fax, Cost Recovery etc.)

Supported Canon Models

- All imageRUNNER engines

Ribstone Systems



Positioning

Ribstone Systems provides a comprehensive solution for legal firms in the areas of bates stamping, electronic document discovery, and image printing. Ribstone software is specifically designed to match legal workflow and through its design is capable of dramatically reducing a firms cost of document creation and management. Ribstone software is offered both embedded and in a Scanstation configuration.

Applications

- Legal customers engaging in litigation work requiring bates stamping
- Legal customers requiring ability to scan and burn images to disc
- Legal customers requiring high printing productivity for image "blowback"

Supported Canon Models

- All imageRUNNER engines

Third-Party Software Products

Captaris Rightfax for MEAP



Positioning

Captaris' Rightfax for MEAP solution provides customers with an embedded solution for scanning and delivering documents to the Captaris Rightfax server for ultimate delivery via facsimile. This solution provides a cost effective way for customers to leverage their MFP investment, connecting directly to their Rightfax server for secure document delivery.

Applications

- Departments and Workgroups requiring centralized fax capabilities
- Any customer who has made investments in Rightfax and imageRUNNER technologies

Supported Canon Models

- All MEAP compatible imageRUNNER-imagePRESS engines

Paper to Office Pro



Positioning

PaperToOffice Pro is a simple solution for a common problem: how to quickly convert paper documents, spreadsheets, and presentations into editable formats. Easy to use, PaperToOffice Pro has an embedded MEAP component and a desktop PC client. From the intuitive interface on the imageRUNNER device, users select the output type and press the scan button. The PaperToOffice Pro desktop client automatically converts to scanned paper to a fully editable Microsoft Word, Excel, PowerPoint, text or PDF file. Problem solved.

Applications

- Any customer needing to turn hardcopy data into electronic format
- Customers needing to convert meeting hand-outs to editable electronic format (PPT, Word, Excel)
- Financial Industry customers
- Human Resource departments frequently updating their HR enrollment forms
- Legal Firms who want to edit old contracts

Supported Canon Models

- All MEAP compatible imageRUNNER-imagePRESS engines

I-O IBM Host Print Solutions



Positioning

I-O's IBM Host Solutions convert IPDS and SCS to PCL, providing organizations with print solutions that connect an IBM host print solution to Canon imageRUNNER devices with ease and efficiency. The I-O Host Solution maximizes the speed of an imageRUNNER device in an IBM host environment because the print server does the resource-intensive data conversion rather than the host, while enabling full finishing capability. I-O Host Solutions offer a one-to-one, up to three, or up to 128 Canon imageRUNNER devices per server.

Applications

- Any customer needing to output data from IBM data servers.
- Customers that want to take advantage of an imageRUNNER devices' print and efficiency capabilities in an IBM print environment.

Supported Canon Models

- Production-level imageRUNNER devices

EFI MicroPress for Canon



Positioning

The EFI MicroPress for Canon maximizes productivity for print environments, ranging from corporate workgroups to high-volume, print-on-demand environments, and features advanced make-ready tools, maximum throughput, and unmatched quality in a scalable solution. Three MicroPress solutions are available: MicroPress Prodigy, Professional, or Production—each solution is tailored to fit the requirements of any organization.

Applications

- Expands color management control
- Achieves greater productivity and workflow control
- Provides higher price performance value
- Automates document building

Supported Canon Models

- Production-level imageRUNNER devices

Third-Party Software Products

EFI Digital StoreFront



Positioning

Digital StoreFront is a Web-to-print solution that simplifies the print procurement and production processes. It automates proofing, estimating, quoting, billing, reporting, and workflow. DSF streamlines print center operations by integrating the flow of data through the print center; it optimizes device utilization and job turnaround by automating the flow of jobs to Canon output devices.

Applications

- Any customer with a print or copy shop which wants to improve productivity.
- Customers that want to better manage and integrate job production data.

Supported Canon Models

- Production-level imageRUNNER devices and imagePRESS digital presses

EFI Fiery Central



Positioning

Fiery Central, a powerful modular, PDF-based production workflow solution, helps medium to high-volume print-on-demand environments increase their job volume, decrease turnaround times and maximize their equipment investment. It comes in three modular components: Fiery Central Focus, Fiery Central Flow and Fiery Central Balance.

Applications

- Provides optional load balancing to maximize efficiency and productivity
- Automates the workflow process and allows management from one centralized interface

Supported Canon Models

- Selected production and light production equipment with Fiery Controllers

Bitstream Pageflex Persona Cross Media Suite



Positioning

Bitstream Pageflex Persona Cross Media Suite enables the creation of one to one marketing campaigns in both print and electronic media from a single solution. The personalization and cross media capabilities of the software provides print providers with a solution for offering value added services to their customers and generating new revenue as a marketing services provider.

Applications

- Customers looking to create customized and personalized documents with variable data printing
- Provides robust variable data printing and cross media capabilities

Supported Canon Models

- imagePRESS digital presses

Printable Technologies FusionPro Web



Positioning

FusionPro Web is an industry leading web to print application. Distributed via a “software as a service” (SaaS) business model, Printable’s FusionPro Web delivers a turnkey, entry level solution for customers to create a commercial storefront and privately branded storefronts for their key customers. The solution is web based and Printable provides the hosting for the storefronts.

Applications

- Any customer with a print or copy shop which wants to improve productivity.
- Customers who want to manage their collateral ordering process

Supported Canon Models

- imagePRESS digital presses

Canon Professional Services Offerings

Professional Services Overview



Positioning

Canon's Professional Services (PS) program makes available a team of highly skilled Canon engineers, project managers, and customer-facing technicians capable of delivering software implementation and customization services on the Dealer's behalf. Divided into three categories, Canon's PS offerings under housed one umbrella program to strengthen Canon's solutions for customers and improve support to Dealers. Some benefits of the new PS initiative include additional service offerings, new selling tools, access to a greater range of resources, and a streamlined engagement process.

Applications

- Dealers that need / want assistance installing Canon-branded software
- Customized Canon software solutions
- Custom-developed embedded MEAP solutions
- Custom-developed Windows-based workflow solutions

Supported Canon Models

- Canon-branded software implementation
- MEAP Customizations
- MEAP Development
- Windows-based customizations
- Windows-based development

1. Software Implementation Services



Positioning

Leveraging the expertise of the STSD Regional Field Systems Solutions team, Canon can provide services for imageWARE-branded applications including assessment, installation, and implementation. Intended to complement the services capabilities of authorized resellers of Canon-branded software, Implementation Services from Canon can will Dealers win new business and deliver increased value to customers.

Canon's technical staff will provide a customer assessment, determine the correct solution, and create a Statement of Work detailing all activities included.

Please refer to detailed guidelines in the Professional Services Engagement Guide on ISG Central.

Applications

- For all customer engagements where installation of Canon software maybe required.
- Dealers with minimal software installation experience
- Dealers with technical bandwidth issues
- Dealers new to a particular Canon software application

Supported Canon Models

- NT-Ware uniFLOW
- iW Document / ScanManager
- iW Accounting Manager
- iW AM for MEAP
- iW Publishing Manager
- iW Prepress Manager
- iW EMC
- iW Secure Audit Manager

2. MEAP Customizations



Positioning

The power of Canon's MEAP platform is in its flexibility and adaptability. Canon's Embedded MEAP Customization offerings combine these attributes with our platform expertise to offer customers unique solutions that address their specific workflow needs. By building the core of commonly-requested solutions near to completion, Canon can quickly customize these MEAP applications to customer specifications. Canon's dedicated engineering staff can also create truly custom solutions.

Applications

- Any customer desiring to leverage Canon's MEAP embedded development platforms to meet a specific application/workflow requirement

Supported Canon Models

- MEAP-enabled imageRUNNER devices

Please note:

All Professional Services products require consultation and creation of specific proposals and Statements of Work. Engage with your Canon RFA/SSE at the earliest possible opportunity. All Professional Services offerings should be formally proposed to customers only after engaging with appropriate Canon STSD or Solutions Development contacts.

Canon Professional Services Offerings

3. Windows Application Customizations



Positioning

Canon's customized development services provide the ability for Canon to develop unique solutions based upon customer requirements. Through these services, Canon can deliver not only MEAP oriented applications, but also supports development on Windows platforms for integration of Canon software into specific customer environments.

Applications

- Any customer desiring to leverage Canon's development platforms in order to meet a specific application/workflow requirement

Supported Canon Models

- imageWARE-branded software
- imageWARE Solution Suite
- Canon Print Drivers
- NT-Ware uniFLOW

Please note:

All Professional Services products require consultation and creation of specific proposals and Statements of Work. Engage with your Canon RFA/SSE at the earliest possible opportunity. All Professional Services offerings should be formally proposed to customers only after engaging with appropriate Canon STSD or Solutions Development contacts.

Professional Services Offerings: MEAP Customizations Menu

Authorized Send



Embedded Mass Customization

Positioning

Authorized Send is a simple MEAP based document scanning solution that requires end users to authenticate themselves prior to accessing the scan function of the Canon imageRUNNER. Using Authorized Send, customers can provide authorized users with basic scanning capabilities while keeping other device functions open for easy access. Authorized Send can pre-populate the sender's email address so that IT admin can track email usage.

Applications

- Basic scanning and document distribution requirements
- Need to authenticate users only for scanning, while leaving all other device functions open
- For customers not desiring to manage a Server - based scanning implementation
- For customers looking for an application similar to HP DSS or Xerox send application.

Supported Canon Models

- Select MEAP compatible imageRUNNER devices

Advanced Authentication – Novell eDirectory



Embedded Mass Customization

Positioning

Advanced Authentication is a MEAP application that locks the entire imageRUNNER device until a user provides the appropriate login and password credentials. Designed to work with for Novell eDirectory, this solution can also be used in other environments using LDAP. imageWARE Accounting Manager (iW AM) may be added to collect device usage.

Applications

- For Novell Netware customers requiring users to authenticate themselves prior to accessing any device functionality
- Can integrate with imageWARE Accounting Manager for tracking usage in Novell environments
- For customers looking to meet compliance requirements such as HIPPA and SOX.

Supported Canon Models

- Select MEAP compatible imageRUNNER devices

Scan to Database



Embedded Mass Customization

Positioning

The Scan to Database software can be customized to allow users to not only scan documents, but to also add appropriate metadata to scanned images. Canon's Scan to Database MEAP software is designed to provide customers with an easy means of scanning documents and delivering these documents to specific customer databases (i.e. Oracle, SAP, Doc. Mgmt. Systems etc.) or acting as an entry point to customer's backend business applications.

Applications

- For customers desiring to migrate from a centralized scanning operation to a distributed scanning model
- Connects imageRUNNER with scanning capabilities to specific customer database applications via FTP, file share (SMB), or web services
- For capturing scanned images including index data associated with those documents

Supported Canon Models

- Select MEAP compatible imageRUNNER devices

Please note:

All Professional Services products require consultation and creation of specific proposals and Statements of Work. Engage with your Canon RFA/SSE at the earliest possible opportunity. All Professional Services offerings should be formally proposed to customers only after engaging with appropriate Canon STSD or Solutions Development contacts.

Professional Services Offerings: MEAP Customizations Menu

Advanced Authentication – Proximity Card



Embedded Mass Customization

Positioning

Proximity Card Authentication leverages a customer's proximity security cards to provide access otherwise secured imageRUNNER devices. A server-less system, the solution maintains security without the need for back-end integration. The solution supports HID Iso Prox, HID iClass, Casi Rusco, and many other card systems and is tailored to the customer's secured environment. imageWARE Accounting Manager (iWAM) may be added to collect device usage.

Applications

- Connects imageRUNNER scanning capabilities to specific customer database applications via FTP or web services.
- For capturing scanned images including index data associated with those documents
- For customers desiring to migrate from a centralized scanning operation to a distributed scanning model

Supported Canon Models

- Select MEAP compatible imageRUNNER devices

Kiosk Solutions



Embedded Mass Customization

Positioning

The Kiosk MEAP solution turns an imageRUNNER into a dedicated pay-for-service device. A two-part solution, Kiosk is designed for deployment into areas such as hotels, airports, copy shops, or any other area with a need for public pay-for-copy, print, fax, or scan services. Canon can customize the Kiosk MEAP component for any customer; a third party must provide the back-end server for billing and device management.

Applications

- Dedicated Pay-for-Copy, Pay-for-Fax, and Pay-for-Print Kiosks
- Designed to be used in public spaces (hotels, grocery stores, airports, copy shops, etc)
- Used with 3rd party back-end billing service

Supported Canon Models

- Select MEAP compatible imageRUNNER devices

Please note:

All Professional Services products require consultation and creation of specific proposals and Statements of Work. Engage with your Canon RFA/SSE at the earliest possible opportunity. All Professional Services offerings should be formally proposed to customers only after engaging with appropriate Canon STSD or Solutions Development contacts.

Professional Services Offerings: Window-Based Customizations

imageWARE Document Manager Integration



Positioning

For customers that need something special in their imageWARE Document Management solution, Canon can modify aspects of imageWARE Document Manager to suit their needs. Using our SDK, Canon engineers can customize both the Administrator and Client portions of the software to integrate Document Manager with other applications.

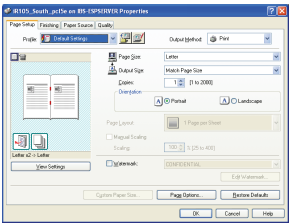
Applications

- Customers that need to connect imageWARE Document Manager to another application
- Automating routine administrative tasks
- Custom User Interface for more efficient data entry
- Customized searches and document display

Supported Canon Models

- imageWARE Document Manger Workgroup and Enterprise Editions

Print Driver Customization



Positioning

When it comes to their IT environment, customers want control – period. Canon helps deliver that control by offering custom configuration of our standard print drivers. Using our SDKs, Canon engineers can modify the default settings and available features on Canon print drivers to meet customer requirements. Canon's engineers can modify a variety of settings in our print drivers to deliver on customer needs such as cost reduction, feature disabling, and preferred settings.

Applications

- Customers that need special features, limitations, or defaults set on standard Canon drivers.
- Examples include: Default to B/W, Default to Duplex, B/W Only drivers (for color devices), automatic hardware configuration in special environments.

Supported Canon Models

- Canon PCL Drivers
- Not Supported: latest PS and UFR II drivers

imageWARE Remote Integration

imageWARE Remote Positioning

imageWARE Remote is a service- and support-oriented product, helping Canon dealers enhance services and automate billing operations. With imageWARE Remote Integration services, Canon can customize the Universal Gateway to allow a dealer to import billing data directly into their accounting software. This streamlines their accounting functions.

Applications

- Any Canon Authorized Dealer with accounting software which can import data.
- Eliminates the need for Dealer staff to manually convert data for their accounting system.

Supported Canon Models

- imageWARE Remote

Please note:

All Professional Services products require consultation and creation of specific proposals and Statements of Work. Engage with your Canon RFA/SSE at the earliest possible opportunity. All Professional Services offerings should be formally proposed to customers only after engaging with appropriate Canon STSD or Solutions Development contacts.